

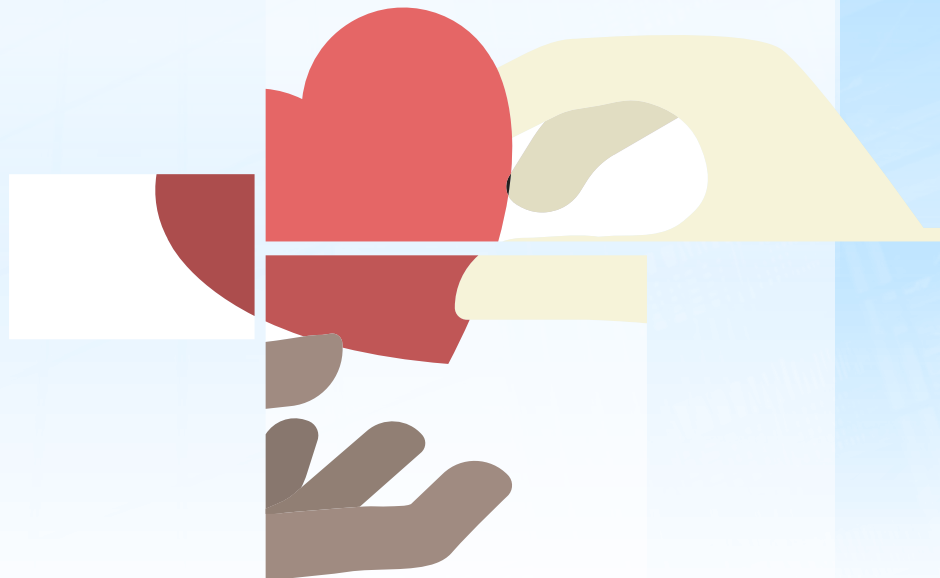
# Charitable Giving, the Tax-Wise Way



Americans—especially the affluent—are some of the most charitable people in the world.\* Chances are, you use some of your wealth to support favorite causes or organizations that are important to you.

But those contributions may not be having as big an impact as they could—and it's possible you're missing out on some valuable charitable tax benefits that could help both you and your favorite charities.

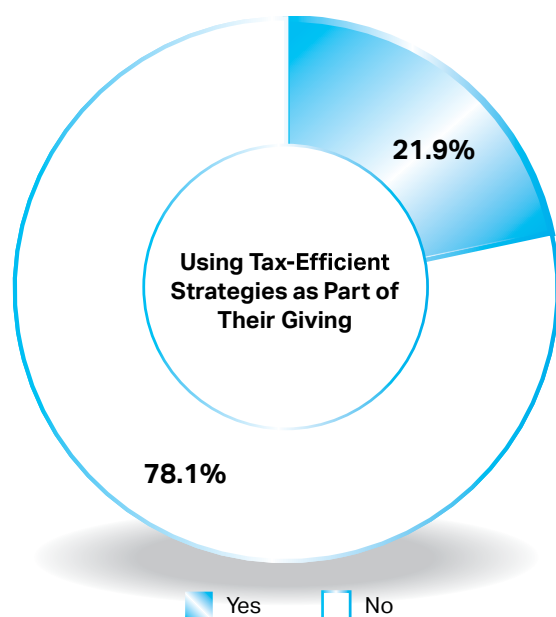
Here's how to size up the effectiveness of your giving—along with some strategies that could potentially put some real power behind your philanthropy.



## THE STATE OF AFFLUENT GIVING

A full 74 percent of the affluent say they make significant charitable contributions every year, according to an AES Nation survey of affluent individuals with investable assets of \$500,000 or more. That strongly suggests the affluent are both willing and able to support causes they care about.

Unfortunately, few of those surveyed donors are using tax-efficient strategies as part of their annual giving efforts. In fact, as seen in the exhibit, only about one in five is doing more than writing checks to charitable organizations each year.



Source: AES Nation, 2018.  
N = 151 inclined affluent individuals.

## TAX-EFFICIENT GIVING

Simply put, tax-wise charitable planning is the process of making a significant charitable gift (either during the person's life or at death) that is part of a financial or estate plan—and doing so as tax-efficiently as possible.

We believe tax-wise charitable planning is usually best accomplished as part of an overall wealth plan that addresses other key issues such as wealth transfer, wealth protection and cash flow needs. When affluent donors can take into account the various assets they have and how they are structured, there is the potential to make meaningful charitable gifts that also provide meaningful tax benefits. Generally, proactive wealth planning that takes an affluent donor's broader financial situation into account can lead to much better outcomes than can so-called checkbook philanthropy, in which charitable gifts are made out of cash flow.

Important: Effective tax-wise charitable planning focuses first on a person's philanthropic agenda and then on how to be as tax-efficient as possible. The intention to use wealth to achieve charitable goals is the most important component of the process.

There are ways, beyond simply writing checks regularly, to make charitable gifts. Three commonly used approaches are:

- **Charitable trusts.** There are different types of charitable trusts that have different tax and other benefits for the donors and the charities. Charitable trusts are often used as part of comprehensive wealth plans—especially estate plans—because they can potentially mitigate various taxes and move assets between the generations.
- **Donor-advised funds.** A donor-advised fund is typically established by a financial services firm, community foundation or charitable group, which manages the fund's day-to-day

IMPORTANT: Effective tax-wise charitable planning focuses first on a person's philanthropic agenda and then on how to be as tax-efficient as possible. The intention to use wealth to achieve charitable goals is the most important component of the process.

DISCLOSURE: Tax laws are subject to change, which may affect how any given strategy may perform. Always consult with a tax advisor.

## TAX-EFFICIENT GIVING CONTINUED....

operations. Donors make irrevocable contributions to the donor-advised fund, and those assets are invested and grow tax-free over time. Donors can then recommend which charities should receive their financial contributions, and the donor-advised fund makes the grants.

- **Private foundations.** A private foundation is a not-for-profit organization that is funded primarily by a person, family or corporation. The assets in a private foundation, which are called the “endowment,” are regularly invested to produce income used to make grants to other charities as well as to support the operation of the private foundation.

Some key points to keep in mind about private foundations and donor-advised funds—two of the more commonly used options used by philanthropically motivated individuals:

- A private foundation gives the donor maximum control. This is not the case with a donor-advised fund, which technically allows the donor only to recommend which organizations receive money.

That said, donor-advised funds in almost all cases honor these recommendations (assuming the recipient organization is a registered charity).

- With a donor-advised fund, the assets are managed by the firm entrusted with the money (such as a mutual fund company or community foundation). With a private foundation, the donor (or his or her advisors) manages the assets.
- From a cost perspective, a private foundation is more expensive to set up and manage than is a donor-advised fund.
- In the case of a private foundation, there are unlimited succession possibilities. This enables a family to exercise control and instill the importance of philanthropy across many generations. In contrast, many donor-advised funds have limitations on succession. In situations where such limitations are reached, the assets in the donor-advised fund go into a general pool at the fund company, community foundation or other sponsoring organization.





## MAKING A DIFFERENCE

Making tax-wise charitable planning an integral part of your wealth planning efforts can be very beneficial. That said, the core of tax-wise charitable planning should be your desire to have an impact on one or more charities.

For those who want to make a difference, charitable strategies such as those outlined here could be very powerful wealth management solutions—and some of the best ways to do well by doing good.

Take some time to think about your own charitable intentions and goals, both what they are today and what they might look like down the road. Armed with that information, you can start to explore and assess various ways to pursue tax-efficient philanthropy.

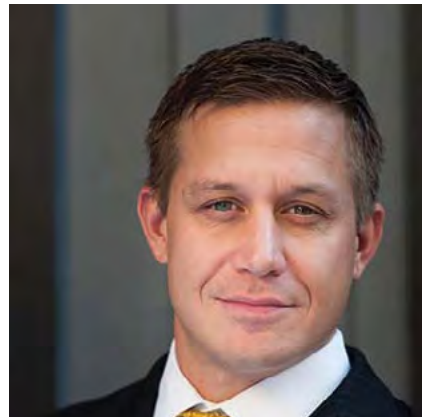
\*A tax professional should be consulted on all tax-related issues.



**Larren C. Odom, MBA, CFP®**  
Wealth Manager



**Cory M. Norpel**  
Operations Director



**Marc M. Girardot, MBA, CFP®**  
Wealth Manager

**ACKNOWLEDGMENT:** This article was published by the VFO Inner Circle, a global financial concierge group working with affluent individuals and families and is distributed with its permission. Copyright 2019 by AES Nation, LLC.

This report is intended to be used for educational purposes only and does not constitute a solicitation to purchase any security or advisory services. Past performance is no guarantee of future results. An investment in any security involves significant risks and any investment may lose value. Refer to all risk disclosures related to each security product carefully before investing. Chastain's advisors and Chastain Wealth Management are not affiliated with AES Nation, LLC. AES Nation, LLC is the creator and publisher of the VFO Inner Circle Flash Report.